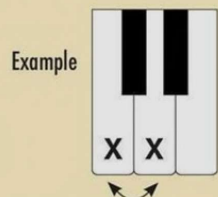


## Seconds (2nds)

Remember, an *interval* is the distance between two keys.

The interval of a **2nd** moves up or down to the:

next KEY — next LETTER NAME — next FINGER



C - D



## Scale

The word **scale** comes from the Latin *scala*, meaning “ladder.” The notes of a scale move up or down by **2nds** (steps). *Penta* is Latin for “five.” A pentascale is a 5-note scale.

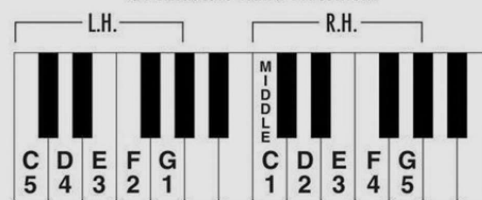
- Place your R.H. fingers on the keys of the **C Pentascale**. Play up, then down, singing **C-D-E-F-G-F-E-D-C**.

- Playing *in the middle* of the piano, say or sing:  
a. finger numbers   b. letter names   c. counts

Keep the quarter notes steady.

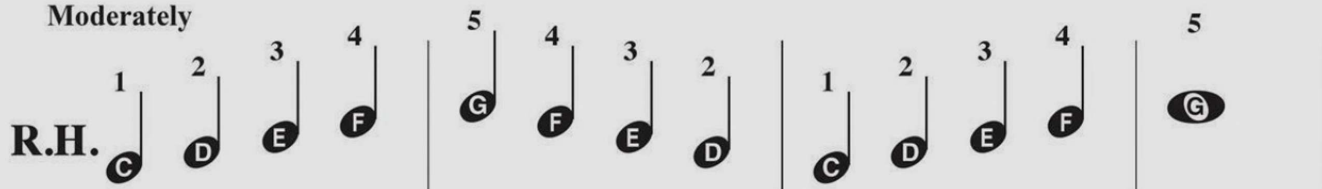
- Transpose** to *higher* and *lower* C Pentascales.

C Pentascale Hand Placement



## C Pentascale Warm-up

Moderately



*f-p* on repeat

